

## LICENSING ACT 2003

Schedule 13

Part A

**CLUB PREMISES CERTIFICATE**  
 HARROW COUNCIL, P O BOX 18, STATION ROAD, HARROW

Club Premises Certificate Number	0512-CTE7-E7DT-TTMF
----------------------------------	---------------------

Part 1 – Club details **OLD LYONIAN ASSOCIATION**

Name of Club in whose name the certificate is granted and relevant registered postal address

**OLD LYONIAN ASSOCIATION**  
**74 PINNER VIEW**

Post town

**HARROW**

Post code

**HA1 4QF**

Telephone number

[REDACTED]

Where the licence is time limited the dates

**N/A**

Licensable activities authorised by the licence

**SALE BY RETAIL OF ALCOHOL**  
**RECORDED MUSIC**  
**PERFORMANCE OF DANCE**  
**PROVISION OF FACILITIES FOR DANCING**
  
**Gareth Clywelyn Roberts**

Signed: Chief Environmental Health Officer

## Appendix A

THE TIMES THE CERTIFICATE AUTHORISES THE CARRYING OUT OF QUALIFYING CLUB ACTIVITIES:

<b>RECORDED MUSIC (F)</b>							
	<b>MON</b>	<b>TUE</b>	<b>WED</b>	<b>THU</b>	<b>FRI</b>	<b>SAT</b>	<b>SUN</b>
	1100-2300	1100-2300	1100-2300	1100-2300	1100-2300	1100-2300	1100-2300

<b>PERFORMANCES OF DANCE (G)</b>							
	<b>MON</b>	<b>TUE</b>	<b>WED</b>	<b>THU</b>	<b>FRI</b>	<b>SAT</b>	<b>SUN</b>
	1100-2300	1100-2300	1100-2300	1100-2300	1100-2300	1100-2300	1100-2300

<b>PROVISION OF FACILITIES FOR DANCING (J)</b>							
	<b>MON</b>	<b>TUE</b>	<b>WED</b>	<b>THU</b>	<b>FRI</b>	<b>SAT</b>	<b>SUN</b>
	1100-2300	1100-2300	1100-2300	1100-2300	1100-2300	1100-2300	1100-2300

<b>SUPPLY OF ALCOHOL (M)</b>							
	<b>MON</b>	<b>TUE</b>	<b>WED</b>	<b>THU</b>	<b>FRI</b>	<b>SAT</b>	<b>SUN</b>
	1100-2300	1100-2300	1100-2300	1100-2300	1100-2300	1100-2300	1200-2230

<b>THE OPENING HOURS OF THE CLUB</b>							
	<b>MON</b>	<b>TUE</b>	<b>WED</b>	<b>THU</b>	<b>FRI</b>	<b>SAT</b>	<b>SUN</b>
	0800-2330	0800-2330	0800-2330	0800-2330	0800-2330	0800-2330	0800-2300

Where the certificate authorises supplies of alcohol whether these are on and/or off supplies

**FOR CONSUMPTION ON THE PREMISES**

# Appendix A

## **Annex 1 – Mandatory conditions**

### **General Conditions – Section 62, Licensing Act 2003**

- (1) The general conditions which a club must satisfy if it is to be a qualifying club in relation to a qualifying club activity are the following.
- (2) Condition 1 is that under the rules of the club persons may not-
  - (a) be admitted to membership, or
  - (b) be admitted, as candidates for membership, to any of the privileges of membership,without an interval of at least two days between their nomination or application for membership and their admission.
- (3) Condition 2 is that under the rules of the club persons becoming members without prior nomination or application may not be admitted to the privileges of membership without an interval of at least two days between their becoming members and their admission.
- (4) Condition 3 is that the club is established and conducted in good faith as a club (see section 63).
- (5) Condition 4 is that the club has at least 25 members.
- (6) Condition 5 is that alcohol is not supplied, or intended to be supplied, to members on the premises otherwise than by or on behalf of the club.

### **The additional conditions for the supply of alcohol – Section 64, Licensing Act 2003**

- (2) Additional condition 1 is that (so far as not managed by the club in general meeting or otherwise by the general body of members) the purchase of alcohol for the club, and the supply of alcohol by the club, are managed by a committee whose members-
  - (a) are members of the club;
  - (b) have attained the age of 18 years; and
  - (c) are elected by the members of the club.This subsection is subject to section 65 (which makes special provision for industrial and provident societies, friendly societies etc.).
- (3) Additional condition 2 is that no arrangements are, or are intended to be, made for any person to receive at the expense of the club any commission, percentage or similar payment on, or with reference to, purchases of alcohol by the club.
- (4) Additional condition 3 is that no arrangements are, or are intended to be, made for any person directly or indirectly to derive any pecuniary benefit from the supply of alcohol by or on behalf of the club to members or guests, apart from-
  - (a) any benefit accruing to the club as a whole, or
  - (b) any benefit which a person derives indirectly by reason of the supply giving rise or contributing to a general gain from the carrying on of the club.

## Appendix A

### **Annex 2 – Conditions consistent with the operating Schedule**

1. Current documented health & safety risk assessments, to include closing / banking arrangements, should be provided. Evidence that staff have been trained in accordance with the risk assessments should also be provided.
2. At least two staff should be on duty after 2200, or more if necessary to manage the anticipated number of patrons on the premises.

### **Annex 3 – Conditions attached after a hearing by the licensing authority.**

N/A

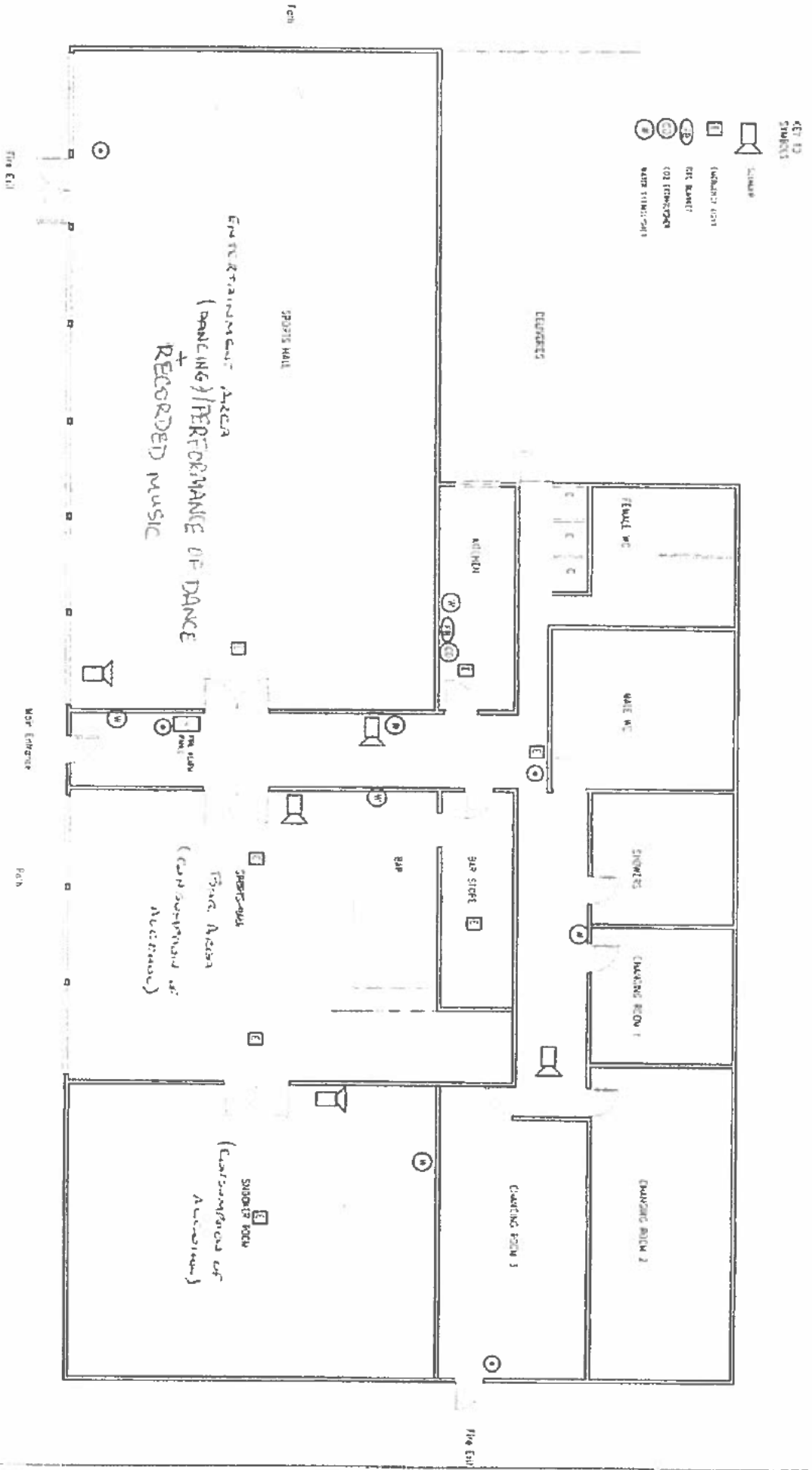
### **Annex 4 – PLANS.**

DATE OF ISSUE: 13 DECEMBER 2005

REASON FOR ISSUE: NEW

ISSUE NUMBER: 1

# Appendix A



- KEY TO SYMBOLS
- SOUND
  - EMERGENCY EXIT
  - FIRE EXTINGUISHER
  - SPRINKLER
  - WATER SINK/TOILET

OLD LYONIAN CLUBHOUSE  
74 PINNAC VIEW, HARROD, MDDX

PLAN LAYOUT  
SCALE 1/100  
GCT/BLP 2005

# Appendix A

ORDNANCE SURVEY  
Scale: 1:1250 or 50:688 inches to 1 mile

Copy of revised field sheet made on .....

